

HORRY COUNTY, SOUTH CAROLINA

INTRODUCTORY SECTION

HORRY COUNTY, SOUTH CAROLINA

**HORRY COUNTY
FINANCE DEPARTMENT**

1301 Second Avenue
Conway, South Carolina 29526
www.horrycounty.org



Post Office Box 296
Conway, South Carolina 29528-0296

Phone: (843) 915-5180
Fax: (843) 915-6180

**HORRY COUNTY, SOUTH CAROLINA
LETTER OF TRANSMITTAL
NOVEMBER 30, 2007**

To the Honorable Chairman, Members of the County Council, County Administrator, and the Citizens of Horry County:

We are pleased to submit the comprehensive Annual Financial Report of the County of Horry for the fiscal year ended June 30, 2007. This report is prepared for the purpose of disclosing the County's financial condition to its residents, elected officials and other interested parties. The financial statements contain all disclosures necessary to enable the reader to gain an understanding of the County's financial activities.

This report consists of management's representations concerning the finances of Horry County. Consequently, management assumes full responsibility for both the completeness and reliability of the information presented in this report. To provide a reasonable basis for making these representations, management of Horry County has established a comprehensive internal control framework that is designed both to protect the government's assets from loss, theft or misuse and to compile sufficient reliable information for the preparation of Horry County's financial statements in conformity with Generally Accepted Accounting Principles (GAAP). Because the cost of internal control should not outweigh the benefits, Horry County's comprehensive framework of internal controls has been designed to provide reasonable rather than absolute assurance that the financial statements are free of material misstatement. As management, we assert that, to the best of our knowledge and belief, this financial report is complete and reliable in all material respects.

Horry County financial statements have been audited by Scott McElveen L.L.P., Certified Public Accountants. The goal of the independent audit was to provide reasonable assurance that the basic financial statements of the County for fiscal year ended June 30, 2007, are fairly stated in accordance with GAAP. The independent audit involved examining, on a test basis, evidence to supporting the amounts and disclosures in the basic financial statements; assessing the accounting principles used and significant estimates made by management; and evaluating the overall financial statement presentation. The independent auditor concluded, based upon the audit, that there was a reasonable basis for rendering an unqualified opinion that Horry County financial statements for the fiscal year ended June 30, 2007 are fairly presented in conformity with GAAP. The independent auditors' report is presented as the first component of the Financial Section of the CAFR.

GAAP require that management provide a narrative introduction, overview, and analysis to accompany the basic financial statements in the form of Management's Discussion and Analysis. This letter of transmittal is designed to complement the Management's Discussion and Analysis and should be read in conjunction with it. Horry County's Management Discussion and Analysis can be found immediately following the report of the independent auditors.

Profile of the Government

Horry County is the Northeastern most County in the State of South Carolina. Encompassing 1,134 square miles, it is also the largest. Horry County was incorporated in 1801 with a population of 550. The county was named after Peter Horry who was a descendent of Huguenot settlers and whose family owned several large plantations in the area. He served as a Brigadier General of Militia and a member of the South Carolina General Assembly during the American Revolution under General Francis Marion, who was known as the Swamp Fox.

Surrounded on the three sides by ocean, rivers, and swamps, Horry developed a distinctive culture, which gave rise to its name, "The Independent Republic of Horry County". From the time of incorporation, Horry County stood off the edge of South Carolina, both literally and figuratively.

In 1975, Horry County adopted the Council-Administrator form of government. Under this type of government, each member of council is elected from a district in which he/she lives and a chairman is elected at-large. There are twelve council members in total. Each council member is elected for four-year terms, half of the members being elected every two years. Elections are held every even-numbered year in the month of November.

The Home Rule Act, passed by the General Assembly in 1976, dictates the responsibility of the Council. According to the Act, county Council's function is to make policy through ordinances and resolutions and shape those policies through the budget process. The Council is also responsible for appointing the County Administrator, the Registrar of Deeds and the Clerk to Council.

The Administrator is responsible for carrying out the policies and ordinances passed by council, for overseeing day-to-day operations of the government, and for appointing the County's Division Directors. The Administrator performs all necessary administrative duties, as directed by Council, and ensures efficient operation of all County functions.

Horry County provides a full range of services, including police and fire protection, EMS and E-911 services, the construction and maintenance of highways, streets and other infrastructure, health and social services, recreational and cultural activities, economic development, and other general administrative support services. In addition, air transportation and terminal support, industrial park development, and operation of a baseball stadium jointly owned with the City of Myrtle Beach are provided under an Enterprise fund concept, with charges set to provide adequate coverage of operating expenses and payments on outstanding debt.

The Council is required to adopt a final budget by no later than the close of the fiscal year. This annual budget serves as the foundation for Horry County's financial planning and control. All department heads present a departmental budget to the Department of Budget and Revenue Management, which is reviewed and a balanced financial plan is presented to the Administrator. Once the Administrator is satisfied with the recommended budget, it is forwarded to County Council. Council must, according to state law, have three readings of the financial plan ordinance and a public hearing before it can be passed and become law. The Administrator is authorized to transfer budgeted funds within a department and between departments, within the same fund. Budget transfers between funds require amendments to the original ordinance. Formal budgetary integration is employed as a management control device during the year. No expenditure in any one of the governmental fund types will exceed the budgeted expenditure amount for that fund without prior amendment of the financial plan ordinance by Council.

Factors Affecting Financial Condition

The information presented in the financial statements is perhaps best understood when it is considered from the broader perspective of the specific environment within which the County operates.

Local Economy

The County's predominantly tourist-based economy continues to thrive, in spite of the state of the national economy. Most of the County's sixty (60) miles of beaches stretching from Little River to Pawley's Island have been developed residentially or commercially while at least 32% of the remainder of the County is yet to be developed. Thirty-eight percent of the state's hotel and motel rooms are located in Horry County. Forty percent of the state's second homes are also located within the County.

Horry County was the fourth-fastest-growing area in the nation between 2005 and 2006, according to the U.S. Census Bureau. Horry County continues to be the No. 1 area for homebuyers to purchase a second home based upon EscapeHomes.com and Forbes magazine. Where to Retire magazine listed South Carolina as the 18th ranked area for retirees over the age of 60 to relocate to; this ranking is only expected to improve as the baby boomers retire.

Myrtle Beach, according to a regional profile of U.S. visitation to South Carolina, estimates that approximately 13.8 million tourists visit the Grand Strand each year. *National Geographic Traveler Magazine*, Travel Channel, and Yahoo! Travel all list Myrtle Beach as one of the nations Top 10 Beaches.

Among the amenities that create such a draw to the region, there are more than 1,700 dining establishments, in excess of 72,000 rooms available for overnight guests, a variety of entertainment theaters and nearly 105 golf courses – not to mention miles of coastline, meandering rivers and abundant natural beauty, all available.

With area courses designed by some of the best-known names in golf, including Jack Nicklaus, Arnold Palmer, Ree Jones, Greg Norman, and Tom Fazio, Horry County boasts one of the largest concentrations of golf facilities in the nation. Golfers will be able to tee off on any of 1,800 golf holes in the county-playing nearly 4.0 million rounds of golf each year. Golf generates more than \$644 million annually for the state's economy and employs more than 14,000 full time workers. The industry has also been instrumental in the expansion of the tourist season, including early spring and late fall to our regular May through October peak. The Horry County area accounts for more than 34 percent of South Carolina's golf courses.

Retail sales, employment and construction are all intimately tied to the tourism industry. The increasing diversity of geographic origin and economic profile of tourist will help to hedge any cyclical downturn in the national economy. Group marketing sales are also an increasing part of the visitor industry for the Grand Strand.

Horry County is more than a bustling center of tourism, it is also a comfortable place in which to live, raise a family, and simply relax and enjoy life. County residents have the unique opportunity to both enjoy the pleasant tranquility of country living as well as the numerous amenities offered along the Grand Strand resort areas.

Commercial and Residential Development

The County's economy remains strong as a result of sustained residential and commercial development over the past ten years. The tax base continues to grow, as well as building permit revenues.

Horry County's biggest development, Carolina Forest, was opened by International Paper in 2000. Carolina Forest is approximately 17 square miles or 10,850 acres. To compare, the City of Myrtle Beach is also approximately 17 square miles or 10,700 acres. In thirty years, 50,000 to 60,000 people could live in Carolina Forest, with it possibly growing into an incorporated town. There will be 37 subdivisions, eight to 10 golf courses, and five million square feet of commercial space. Horry County is striving to make this the County's first fully zoned and planned community. The overall concept is to intersperse houses with sidewalks, arranged by subdivisions with matching signage, all planned around a downtown district with an old-fashioned Main Street called "Town Centre". Plans are being prepared for a precinct police department, fire stations and equipment, school construction and controlled commercial development as well as libraries and recreational facilities. The population is estimated to be approximately 60 percent retirees and 40 percent younger families. The growth is expected to take place over the next 20 to 30 years. Due to this mass development, the County is continuing to analyze funding methods such as impact fees, admissions tax, property taxes, and business license to ensure its ability to provide services into the future.

In 1999 Burroughs and Chapin began development of the Grande Dunes Resort project, a high profile, full service resort stretching from the beach to the Intracoastal Waterway between 82nd Avenue North and the Dunes Golf and Beach Club in Myrtle Beach. The residential resort, touting classic Mediterranean architecture, will provide numerous upscale amenities to include golf and tennis facilities, an ocean club, and private marina. Accommodations, upscale ships and restaurants are all part of the plan for the Marina Village section of the development, which is open to the public. In 2007, sales and rental activities have begun for the residential facilities as well as the boat slips at the marina.

The company also broke ground on Horry County's newest growth endeavor currently in development – The Multi-County Business Park, which is home to the 1.4 million square foot Coastal Grand – Myrtle Beach Mall on US 501 and US 17 Bypass. The metropolitan-size shopping mall opened in March of 2004 and houses anchor stores such as Belks, Sears, Dillards, Dick's Sporting Goods, and Bed Bath & Beyond. In addition to the mall, space is available for up to 20 out parcels for free standing business. As of 2007, these out parcels are 80% occupied.

Shopping opportunities continue to be bountiful by improvements to the Grand Strand – from the Tanger Outlet Stores on US 501 to the Tanger Outlet Center located in the northernmost section of Myrtle Beach on US 17. Outlet shops such as SAKS, GAP, Osh Kosh, Sketchers, Croscill, and Bombay make either of these retail gems a must see. Colonial Mall, Barefoot Landing and Broadway at the Beach continue to make enhancements to the shopping arena by adding specialty shops, the Nostalgia Park and increasing the number of new restaurants.

Building Permits Issued

<u>Fiscal Year</u>	<u>Number</u>	<u>Revenue</u>
2005	9,647	\$7,095,552
2006	11,981	\$9,141,771
2007	9,909	\$6,905,055

Long-term Financial Planning

Unreserved, undesignated fund balance in the general fund (18% of the FY08 general fund expenditure budget) continues to fall within the policy guidelines set by County Council for budgetary and planning purposes (15% of the general fund operating budget).

The outlook for the County is as exciting as the past has been. The Census 2006 results reflect a permanent population of 238,493 for Horry County with projections showing continued growth to a population of 296,000 by the year 2010.

To address the ongoing capital needs for the growing community, Horry County Council approved the development of a Capital Improvement Program Policy. This policy calls for the adoption of a formal five-year Capital Improvements Program to be updated annually. The County will attempt to budget as pay-as-you-go funding for capital improvements an amount equal to at least 3% of General Fund operating revenues.

Major Initiatives

Expanding transportation, infrastructure, and service needs are a constant strain on the government entity. In spite of the difficulty of predicting such needs, an attempt has been made to anticipate the County’s growth and to create opportunities and expand services to accommodate the demands of the citizens. In the area of Public Safety, the expansion and merger of our Fire and EMS departments facilitate desirable response time; in Libraries, the expansion plans facilitate customer service. Major equipment (fire trucks, ambulances, and books) is included in the Capital Improvement Plan because of the high dollar impact of these items. In addition to the primary government’s Capital Improvements Plan, major road projects are in progress or are planned for the near future. The County has also taken great steps to manage stormwater issues and is using strong initiative in the area of geographical information system development.

A strong commitment to building and diversifying our economy is evident through our emphasis on economic development. The County currently operates three industrial parks. Overall, community commitment exists to bring in new industry – as demonstrated by the example of Horry Electric Cooperative’s contributions, through the Rural Development Act, to assist in the infrastructure development of these parks.

On November 7, 2007, the voters of Horry County passed a one-cent capital projects sales tax that went into effect May 2007, and by state law, will end seven years later. Horry County is slated to receive \$425,539,087 over this seven-year period, which will be used to fund one of the largest local road improvement program in the history of Horry County. The proceeds will be used for the following projects:

1. \$ 19,600,000: Pave 20 miles of County dirt roads;
2. \$ 945,000: Resurface 12 miles of County roads;
3. \$ 49,500,000: Construct grade separated interchange at the intersection of US Hwy. 17 Bypass and SC Hwy. 707 at the backgate of the former Myrtle Beach air base;
4. \$ 132,250,000: Widen SC Hwy. 707 from Enterprise Road to the County line including intersection improvements at SC Hwy. 544;
5. \$ 25,750,000: Pave 25 miles of County dirt roads;
6. \$ 990,000: Resurface 12 miles of County roads;
7. \$ 46,000,000: Construct Aynor overpass;
8. \$ 1,035,000: Resurface 12 miles of County roads;
9. \$ 76,000,000: Widen Glenss Bay Road to 3 lanes and construct grade separated interchange at US Hwy. 17 Bypass;
10. \$ 1,080,000: Resurface 12 miles of County roads;
11. \$ 27,750,000: Pave 25 miles of County dirt roads;
12. \$ 1,125,000: Resurface 12 miles of County roads;
13. \$ 6,500,000: Pave 2 lanes of International Drive from Carolina Forest to SC Hwy. 90;
14. \$ 682,500: Resurface 7 miles of County roads;
15. \$ 36,100,000: Pave 30 miles of County dirt roads.

Capital Projects Under Construction

The J. Reuben Long expansion program is underway with the addition of a new wing to the Minimum Security building as the first phase. An Architectural/Engineering firm has been selected and planning of the expansion of the main building has begun. County Council has allocated a significant initial budget to provide for the planning and programming and \$50 million is to be provided from the issuance of General Obligation bonds in fiscal year 2008.

Design has been completed for the renovation of the Burroughs School and McCown Auditorium buildings which will become the new home of the Horry County Museum. The construction phase will begin in the spring of 2008 with anticipated completion in mid 2009.

The Conway Health Department project is near completion and will consolidate all Horry County SCDHEC functions into a single building at the Horry County Community Service Complex on Industrial Park Boulevard.

Ride Plan

The most aggressive road construction program in the history of Horry County, Road Improvement and Development Effort (RIDE), was approved by Governor Beasley in September 1996. The RIDE Project is the initiation of a comprehensive solution for transportation problems which pairs significant funding from the local level with funding provided by the State of South Carolina. Horry County enacted an ordinance in the fall of 1996 that implemented a 1.5 percent hospitality fee (accommodations, restaurants, amusements, golf and theaters) effective January 1, 1997. The purpose of this fee is to provide the financial ability for Horry County to partner with the State of South Carolina to meet the infrastructure needs of the County.

The participating parties for the RIDE project are Horry County, the South Carolina Transportation Infrastructure Bank and the South Carolina Department of Transportation. The role of the South Carolina Transportation Infrastructure Bank is to provide the necessary financing and funding for the RIDE project. More detailed information about the technical aspects of the intergovernmental agreement is provided in Note 17 of the basic financial statements.

The total funding committed for the RIDE project is \$1.4 billion. Pursuant to the Horry County Road Improvement and Development Effort Program (the "RIDE Program"), Horry County entered into various long-term loan agreements with the South Carolina Transportation Infrastructure Bank (the "SIB") to provide funding for various road construction projects in the County. The State Infrastructure Bank has made available financial assistance, in the form of both loans and grants, to Horry County under several intergovernmental agreements (IGA). The following three loans were made under these agreements: IGA Loan #1 - \$300,000,000, IGA Loan #2 - \$247,577,000 and IGA Loan #3 - \$2,279,950 for a total of \$549,856,950. Horry County is required to make payments from its Hospitality 1.5% Special Revenue Fund to repay loans #1 and #2. Loan #3 is being repaid from Admissions Tax revenue. Horry County is not obligated to make payments from any other source of funds and Horry County's full faith, credit and taxing power are not pledged in connection with the loans from the State Infrastructure Bank. The current and long-term portion of outstanding debt service related to the RIDE project as of June 30, 2007 is \$350 million. Future debt service payments for the RIDE project are expected to be \$433 million.

The RIDE project is being implemented in phases and includes a series of interconnected highway construction and road enhancements that will improve the overall transportation network in Horry County.

Major projects in RIDE are the Conway Bypass (Highway 22), a six-lane controlled access highway between Aynor and Conway to U.S. 17 near Colonial Mall; and Carolina Bays Parkway (Highway 31); a six lane limited access highway between S.C. Highway 9 in the North and S.C. Highway 544 in the South; a four-lane bridge spanning the Intercoastal Waterway at Fantasy Harbour; and the North Myrtle Beach Connector, a four-lane road connecting S.C. Highway 90 and U.S. 17 to the Carolina Bays Parkway. Other projects resulted in improvements to S. C. Highway 544, S.C. Highway 501 and U.S. 17. Other road improvements will be funded with the County's Capital Project Sales Tax.

In June of 2007, the County entered into an intergovernmental agreement with the State Infrastructure Bank in which the County received a funding commitment for the Carolina Bays Parkway of \$150 million from the State Infrastructure Bank of which \$40 million was made available for immediate distribution by the State Infrastructure Bank. A portion of the local sales tax (\$93.6 million) serves as the local match for the funds. Additionally, in November of 2007 the State Infrastructure Bank approved a commitment to provide funding of \$85 million for the continued extension of Carolina Bays Parkway (Highway 31) to the southern portion of Horry County ending at S. C. Highway 707; there is no matching requirement on these funds.

Geographic Information System (GIS) Program

The Information Technology GIS Department received a number of awards for the implementation of the County's GIS and its integration with enterprise applications. The IT/GIS Department has successfully deployed a new Register of Deeds Application this past year, along with mobile units in the field for the Police, Sheriff's Department, and Fire/Rescue. The State of South Carolina has deployed their Case Management System in the Magistrates and Clerk of Courts offices, in the County and all of the municipalities. All of these users are now using not only the case management system but our Document Management System (OnBase). The fiber infrastructure is being completed to provide redundancy to the County's WAN to ensure communications with all of the cities on the CAD system. Upcoming projects include:

- CAMA Deployment Spring 08
- CopLink Investigative Deployment 08
- AVL in Public Works vehicles
- Management of parcel layer editing
- Land Management Software Deployment (Code Enforcement, Public Works, Planning and Zoning, Stormwater)
- Road Centerline Data Management
- Sweetsoft Billing Software Deployment
- Scanning of Historical Documents into OnBase
- Reflight of Aerial imagery planned for 2008

Airport

The Department of Airports is responsible for the management of Horry County's Airport System, which consists of the Myrtle Beach International Airport (MYR), as well as the Conway/Horry County (HYW), Grand Strand (CRE) and Loris/Twin City Airports (5J9).

The County initiated commercial air service operations at Myrtle Beach Air Force Base under a joint use agreement with the U.S. Air Force in 1975 in response to the growing demand for air services to the Myrtle Beach area. In 1993, the Air Force Base closed and the airfield was given to the County and renamed Myrtle Beach International Airport. MYR consists of over 1,900 acres of land, located within the City of Myrtle Beach. MYR is a County facility consisting of a passenger terminal complex, a 9,500-foot runway and related taxiways, a general aviation apron and supporting buildings and hangers. Conway, Grand Strand and Loris Airports are general aviation airports.

The Department of Airports is moving forward with implementing its various general aviation airports' Master Plans expansion projects to insure that sufficient capacity will be available to meet future general aviation demands. Under the direction of County Council, the Department has also initiated a program to revise the Airport Layout Plan for Myrtle Beach International Airport to reflect recent decisions regarding the location of future facilities at that airport. In addition, the Department is developing a new general aviation terminal complex on the westerly side of the Myrtle Beach International Airport, fuel farm improvements at HYW, obstruction removal at CRE and obstruction marking and land purchases at 5J9.

In February 2006, the South Carolina Department of Commerce, Division of Aeronautics released an economic impact study of the County's airports. That study, prepared by Wilbur Smith Assoc., estimates the direct and indirect economic impact of the four county airports is over \$776.3 million annually. The airports' existing tenants comprise of companies specializing in the handling, servicing, modification and repair of aircraft. The County's airports are ideally suited for these industries because of their excellent facilities and the quality and cost of living in the area.

Funding

The funding of the Health Department and Museum was provided through the issuance of an \$11 million dollar General Obligation Bond issued in April of 2007.

A one-cent sales tax increase went into affect May 1, 2007 to pay for several major infrastructure projects over a 7-year period.

A 1.5% Hospitality Fee is being assessed County-wide on all prepared foods, accommodations and amusements to be used for the improvement and construction of roads.

The 1.0% Hospitality Fee assessed on the unincorporated areas of the county has been used to issue revenue bonds to fund portions of the County's local road improvement plan, Public Safety, GIS and Stormwater project start-up in 2001. The fee was also used to fund the construction of the Drug Lab.

The Stormwater Management program is generating utility fees to cover construction costs and operational costs generated from maintenance and staffing needs.

The County imposed a Solid Waste fee in fiscal year 2004, which is used to fund E-911 enhancements.

Projects not provided for by debt, grant funding, or user fees will require transfers from the General Fund or a millage assessment.

Awards and Acknowledgements

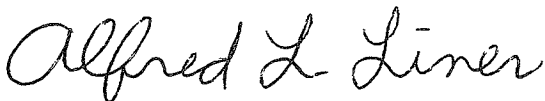
The Government Finance Officers Association of the United States and Canada (GFOA) awarded a Certificate of Achievement for Excellence in Financial Reporting to Horry County for its comprehensive annual financial report (CAFR) for the fiscal year ended June 30, 2006. This was the twentieth consecutive year that Horry County has achieved this prestigious award. In order to be awarded a Certificate of Achievement, a government must publish an easily readable and efficiently organized comprehensive annual financial report. This report must satisfy both generally accepted accounting principles and applicable legal requirements.

A Certificate of Achievement is valid for a period of one year only. We believe that our current report continues to meet the Certificate of Achievement program requirements, and we are submitting it to the GFOA to determine its eligibility for another award.

In addition, Horry County also received the GFOA's Distinguished Budget Presentation Award for its annual budget document dated July 1, 2006 for fiscal year ended June 30, 2007. This was the eighteenth consecutive year that Horry County has received this prestigious award. In order to qualify for the Distinguished Budget Presentation Award, the government's budget document had to be judged proficient as a policy document, a financial plan, an operations guide, and a communications device.

The preparation of this report could not be accomplished without the efficient and dedicated services of the entire staff of the Finance Department and the various division directors, department heads and employees who contributed to its preparation. We would like to express our appreciation to all members of the department who assisted and contributed to its preparation and to the staff of Scott McElveen, L.L.P. who diligently strived to provide technical guidance and assistance. We would also like to thank Horry County Council and the County Administrator for their leadership and support in planning and conducting the financial operations of the County in a responsible and progressive manner.

Respectfully submitted,



Alfred L. Liner
Chief Financial Officer

Certificate of Achievement for Excellence in Financial Reporting

Presented to

Horry County
South Carolina

For its Comprehensive Annual
Financial Report
for the Fiscal Year Ended
June 30, 2006

A Certificate of Achievement for Excellence in Financial Reporting is presented by the Government Finance Officers Association of the United States and Canada to government units and public employee retirement systems whose comprehensive annual financial reports (CAFRs) achieve the highest standards in government accounting and financial reporting.



Oliver S. Cox

President

Jeffrey R. Emer

Executive Director

MEMBERS OF COUNTY COUNCIL

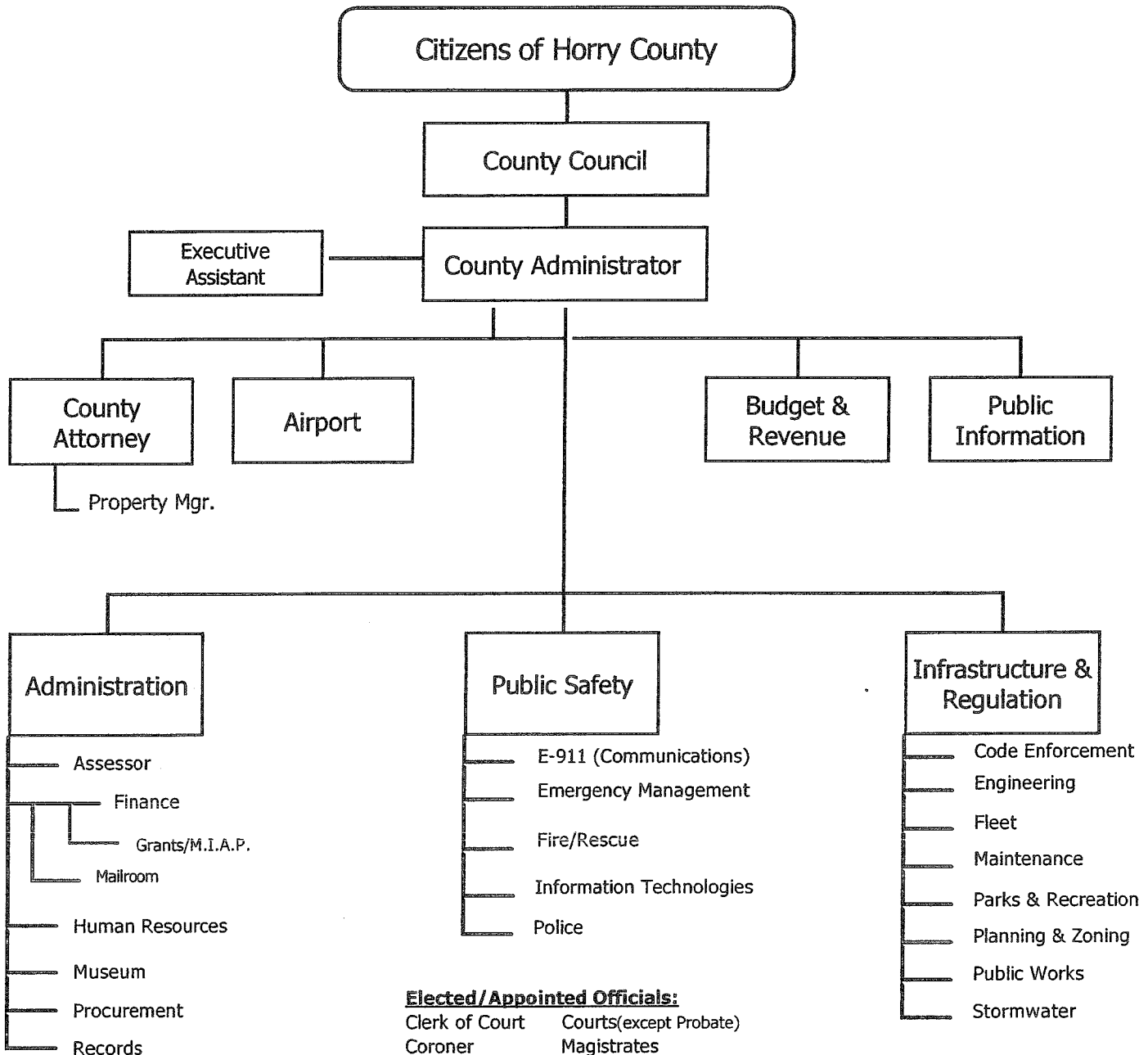
Elizabeth D. Gilland	Chairperson
Marion Foxworth	Vice Chairperson
Harold Worley	Member, District 1
Brent Schulz	Member, District 2
Marion Foxworth	Member, District 3
Michael L. Ryan	Member, District 4
Howard D. Barnard, III	Member, District 5
Bob Grabowski	Member, District 6
James R. Frazier	Member, District 7
Carl Schwartzkopf	Member, District 8
W. Paul Prince	Member, District 9
Kevin J. Hardee	Member, District 10
Al Allen	Member, District 11

ELECTED OFFICIALS

M. Lois Eargle	Auditor
Melanie Huggins	Clerk of Court
Robert Edge, Jr.	Coroner
Deirdre W. Edmonds	Judge of Probate
Phillip E. Thompson	Sheriff
J. Gregory Hembree	Solicitor Fifteenth Circuit
Roddy Dickinson	Treasurer

ADMINISTRATIVE OFFICIALS

Danny Knight	County Administrator
Anne Wright	Division Director, Administration
Paul Whitten	Division Director, Public Safety
Steve Gosnell	Division Director, Infrastructure & Regulation
John Weaver	County Attorney



Elected/Appointed Officials:

Auditor
 Library
 Master-in-Equity
 Registrations & Elections
 Treasurer
Hospitality/Business License
Delinquent Tax

Boards & Commissions:

Airport Advisory Committee
 Assessment Appeals
 Accommodations Tax Advisory
 Fee Appeals
 Memorial Library
 Museum
 Registration & Election

Supplemental Funded Agencies

Coastal Carolina College
 Horry-Georgetown Technical College

Elected/Appointed Officials:

Clerk of Court
 Coroner
 Solicitor
 Sheriff
Detention
Juvenile Detention

Boards & Commissions:

Shoreline Behavioral
 Council on Aging

Supplemental Funded Agencies:

S.C. Dept. of Health
 S.C. Dept. of Probation & Parole
 S.C. Dept. of Social Services
 Public Defender

Elected/Appointed Officials:

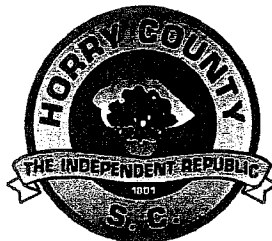
None

Boards & Commissions:

Arcadian Shores Special Tax District
 Board of Architectural Review
 Board of Adjustment & Zoning Appeals
 Construction Adjustment Appeals
 Mt. Gilead Special Tax District
 Open Space
 Planning Commission
 Socastee Recreation District
 Solid Waste Authority
 Stormwater Advisory
 Vereen Memorial Gardens

Supplemental Funded Agencies:

MB Regional Economic Dev. Corp.



HORRY COUNTY, SOUTH CAROLINA