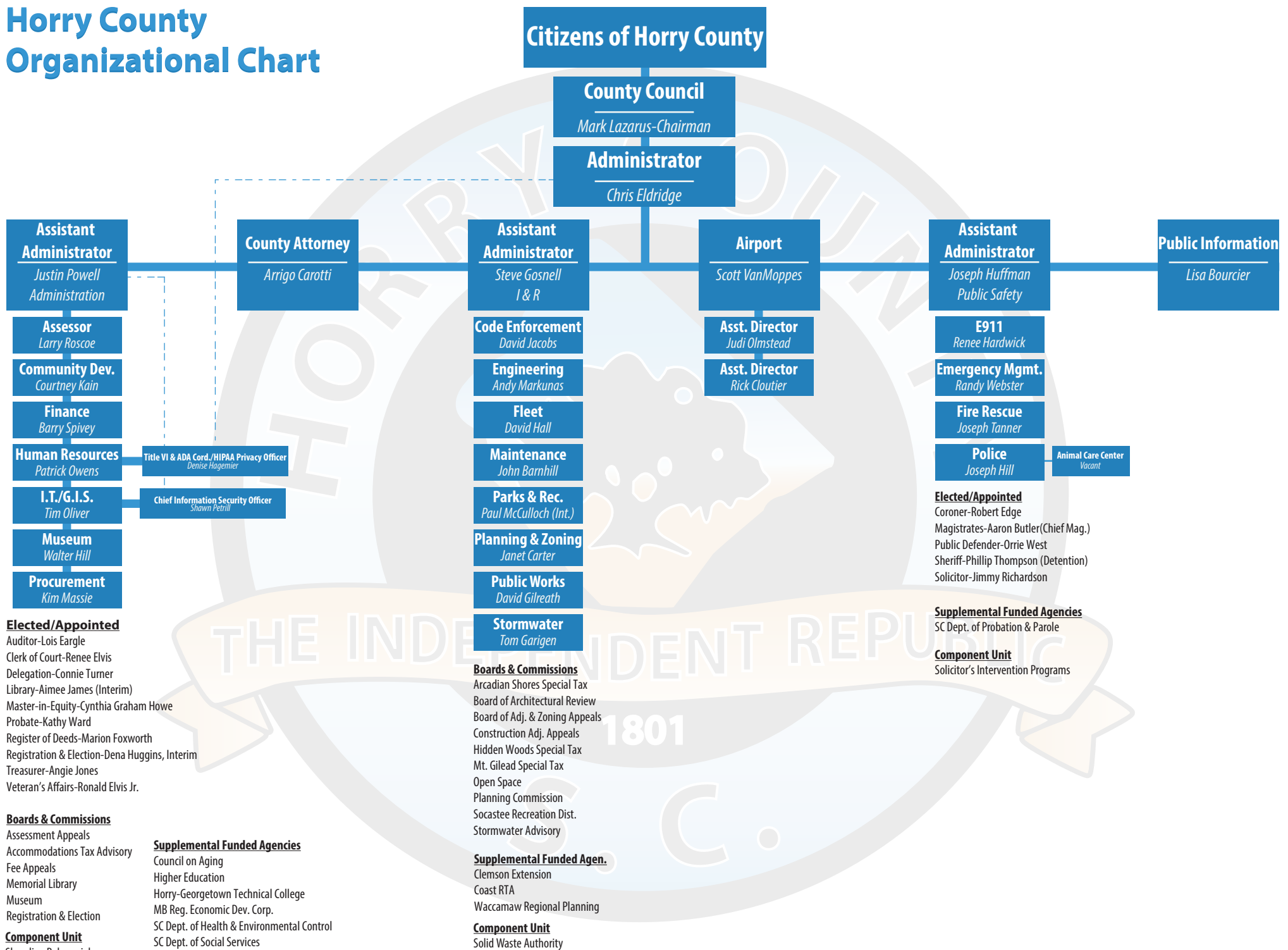


Horry County Organizational Chart



Elected/Appointed

- Auditor-Lois Eargle
- Clerk of Court-Renee Elvis
- Delegation-Connie Turner
- Library-Aimee James (Interim)
- Master-in-Equity-Cynthia Graham Howe
- Probate-Kathy Ward
- Register of Deeds-Marion Foxworth
- Registration & Election-Dena Huggins, Interim
- Treasurer-Angie Jones
- Veteran's Affairs-Ronald Elvis Jr.

Boards & Commissions

- Assessment Appeals
- Accommodations Tax Advisory
- Fee Appeals
- Memorial Library
- Museum
- Registration & Election

Component Unit

- Shoreline Behavioral

Supplemental Funded Agencies

- Council on Aging
- Higher Education
- Horry-Georgetown Technical College
- MB Reg. Economic Dev. Corp.
- SC Dept. of Health & Environmental Control
- SC Dept. of Social Services

Boards & Commissions

- Arcadian Shores Special Tax
- Board of Architectural Review
- Board of Adj. & Zoning Appeals
- Construction Adj. Appeals
- Hidden Woods Special Tax
- Mt. Gilead Special Tax
- Open Space
- Planning Commission
- Socastee Recreation Dist.
- Stormwater Advisory

Supplemental Funded Agen.

- Clemson Extension
- Coast RTA
- Waccamaw Regional Planning

Component Unit

- Solid Waste Authority

Elected/Appointed

- Coroner-Robert Edge
- Magistrates-Aaron Butler(Chief Mag.)
- Public Defender-Orrie West
- Sheriff-Phillip Thompson (Detention)
- Solicitor-Jimmy Richardson

Supplemental Funded Agencies

- SC Dept. of Probation & Parole

Component Unit

- Solicitor's Intervention Programs